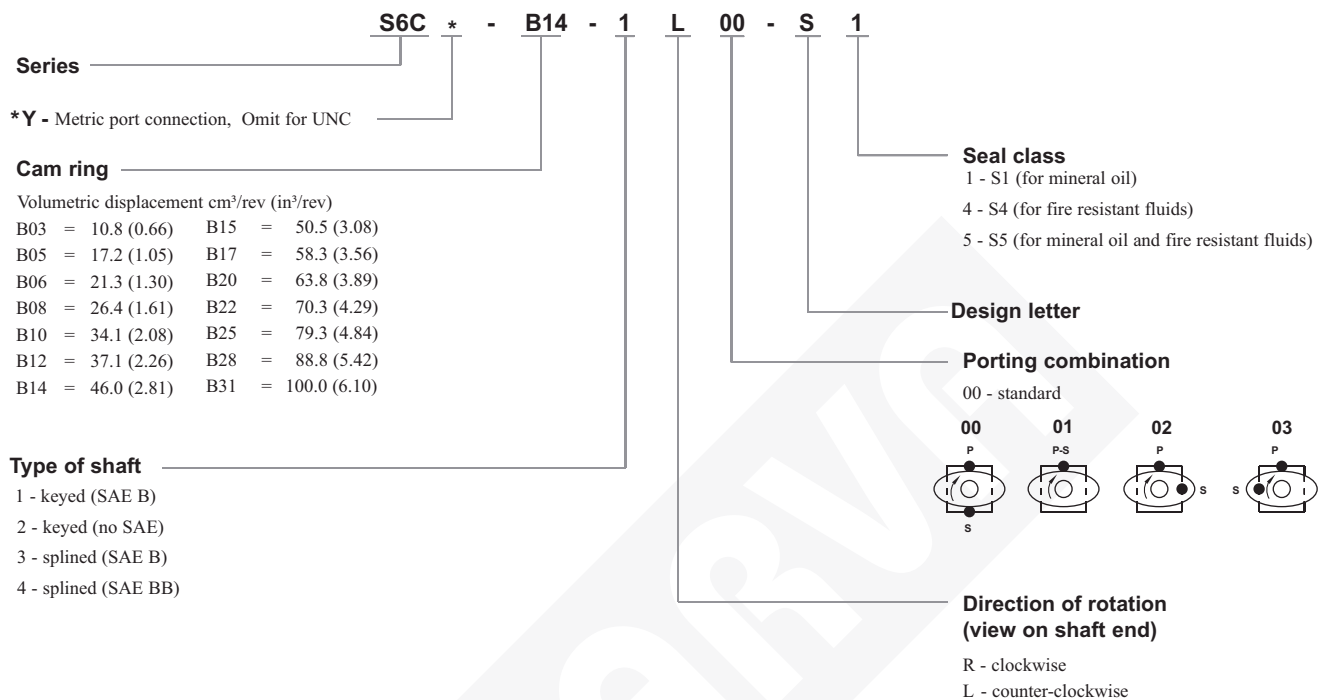


ORDERING CODE - S6C SERIES



OPERATING CHARACTERISTICS - TYPICAL (24 cST)

Pressure port	Series	Volumetric Displacement V _p		Flow q & n = 1500 rpm						Input power r p & n = 1500 rpm					
		in ³ /rev	cm ³ /rev	p = 0 bar (0 psi)		p = 140 bar (2000 psi)		p = 240 bar (3500 psi)		p = 7 bar (100 psi)		p = 140 bar (2000 psi)		p = 240 bar (3500 psi)	
				gpm	lpm	gpm	lpm	gpm	lpm	hp	kw	hp	kw	hp	kw
S6C	B03	0.66	10.8	4.29	16.2	2.96	11.2	2.04	7.7	1.74	1.3	7.11	5.3	11.26	8.4
	B05	1.05	17.2	6.83	25.8	5.50	20.8	4.57	17.3	1.88	1.4	10.06	7.5	16.36	12.2
	B06	1.30	21.3	8.44	31.9	7.11	26.9	6.19	23.4	2.01	1.5	11.94	8.9	19.71	14.7
	B08	1.61	26.4	10.48	39.6	9.15	34.6	8.22	31.1	2.15	1.6	14.35	10.7	22.93	17.7
	B10	2.08	34.1	13.52	51.1	12.19	46.1	11.26	42.6	2.28	1.7	18.64	13.4	29.90	22.3
	B12	2.26	37.1	14.71	55.6	13.36	50.6	12.46	47.1	2.28	1.7	19.31	14.4	32.32	24.1
	B14	2.81	46.0	18.25	69.0	16.93	64.0	16.00	60.5	2.55	1.9	23.60	17.6	39.56	29.5
	B15	3.08	50.5	20.00	75.6	18.73	73.2	19.02	67.5	2.68	2.0	25.61	19.1	42.91	32.0
	B17	3.56	58.3	23.12	87.4	21.79	82.4	20.87	78.9	2.82	2.1	29.37	21.9	49.48	36.9
	B20	3.89	63.8	25.32	95.7	23.99	90.7	23.07	87.2	2.95	2.2	31.92	23.8	53.91	40.2
	B22	4.29	70.3	27.88	105.4	26.56	100.4	25.63	96.9	3.08	2.3	35.00	26.1	59.14	44.1
	B25 ⁽¹⁾	4.84	79.3	31.46	118.9	30.13	113.9	29.21	110.4	3.35	2.5	39.16	29.2	66.38	49.5
	B28 ⁽¹⁾	5.42	88.8	35.24	133.2	33.92	128.2	33.28 ⁽²⁾	125.8 ⁽²⁾	3.75	2.8	43.85	32.7	75.04 ⁽²⁾	55.5 ⁽²⁾
	B31 ⁽¹⁾	6.10	100.0	39.68	150.0	38.35	145.0	37.72 ⁽²⁾	142.6 ⁽²⁾	3.75	2.8	48.95	36.5	85.95 ⁽²⁾	63.4 ⁽²⁾

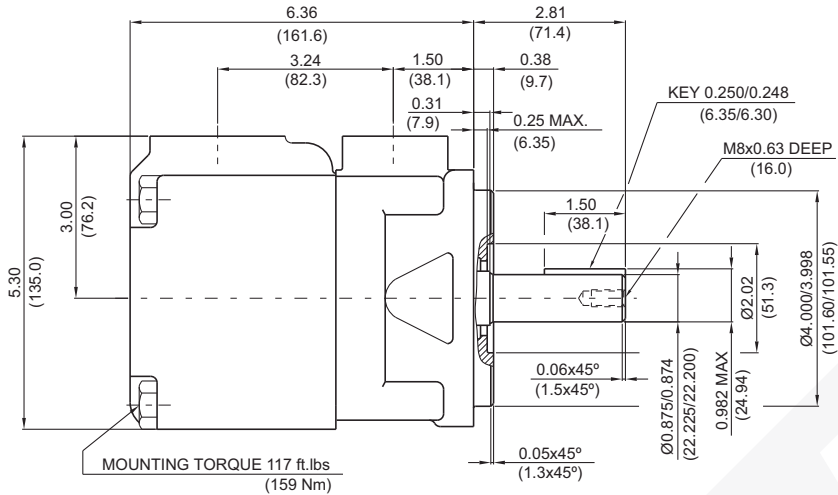
(1) B25-B28-B31 = 2500 RPM. max.

(2) B28-B31 = 210 bar (3000 psi) max int..

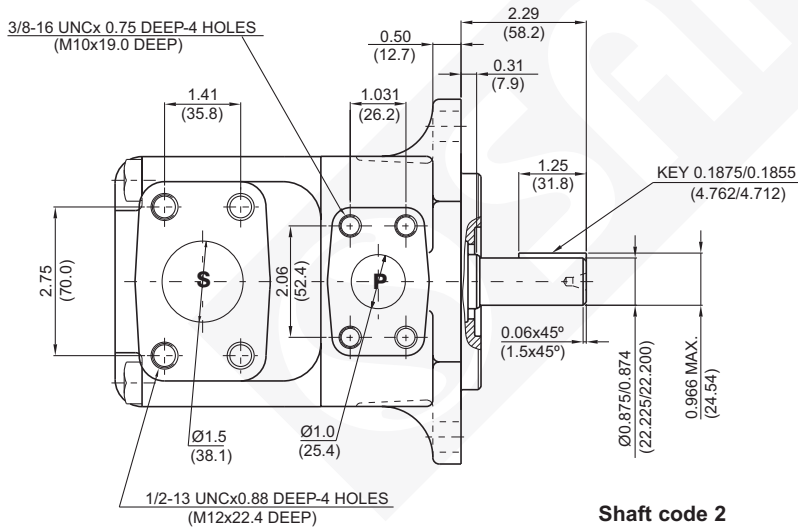
B03-B22 Peak Pressure 300 bar

DIMENSIONS - S6C SERIES

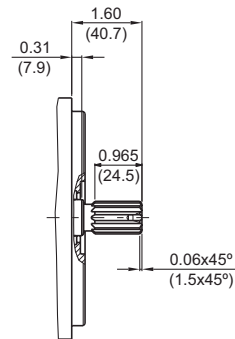
WEIGHT : 15.5 Kg.



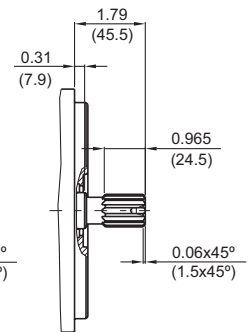
Shaft code 1
(Keyed SAE B)



Shaft code 2
(Keyed no SAE)



Shaft code 3
SAE B splined shaft
Class 1-J498b
16/32 dp. 13 teeth
30° pressure angle
flat root side fit



Shaft code 4
SAE BB splined shaft
Class 1-J498b
16/32 dp. 15 teeth
30° pressure angle
flat root side fit

Shaft torque limits in ² /rev x psi (ml/rev x bar)	
Shaft	V _p x p max.
1	14473 (16500)
2	12666 (14300)
3	18246 (20600)
4	19309 (21821)